

Light efficiency:

57 Lumen/Watt

Light quality:

CRI: 95.7

Color temperature:

5788 K

Output: 18427 lm

Peak: 327294 cd

Power: 321.3 W

PF: 0.99



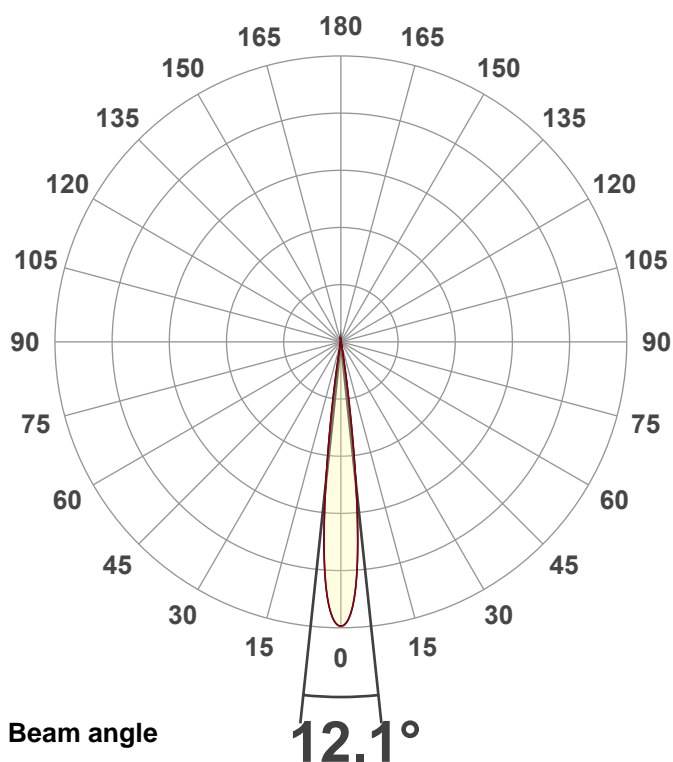
Product name:

PAR Z300 6K (Zoom 20°, Full On)

Item number:

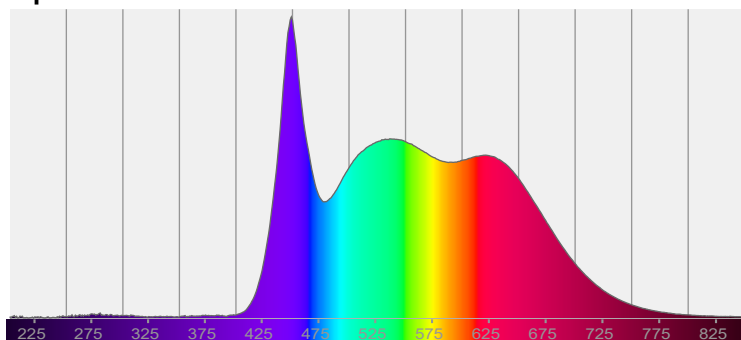
Date and time:

8/18/2025 9:02:58 AM

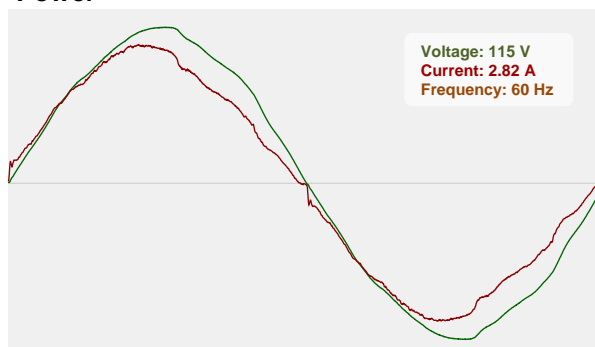


CIE 1931
x: 0.326
y: 0.335

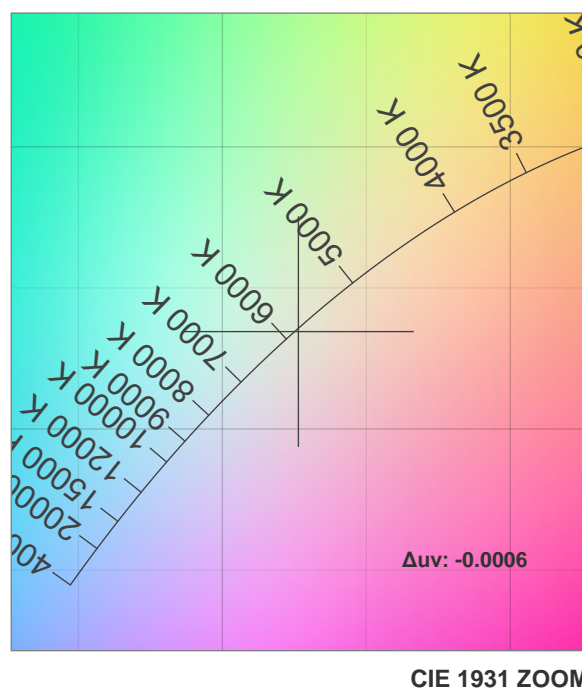
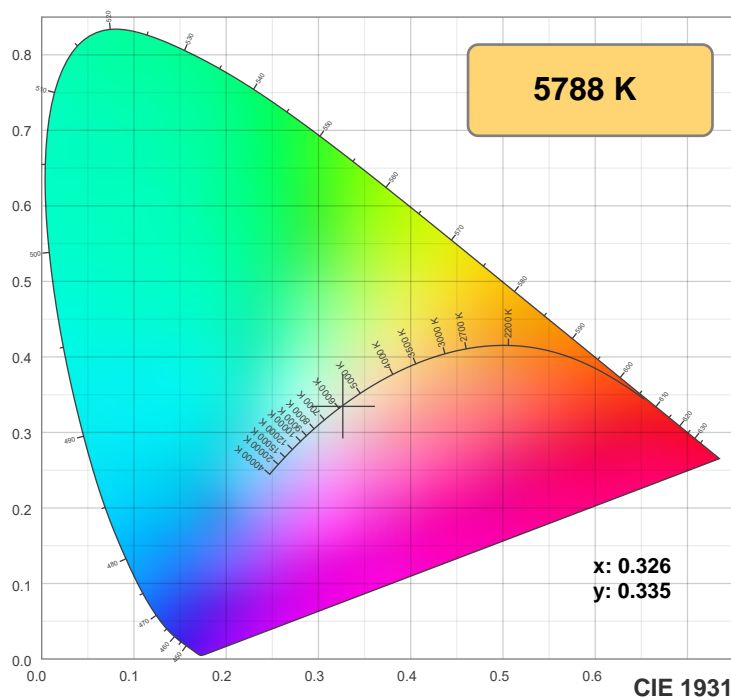
Spectra



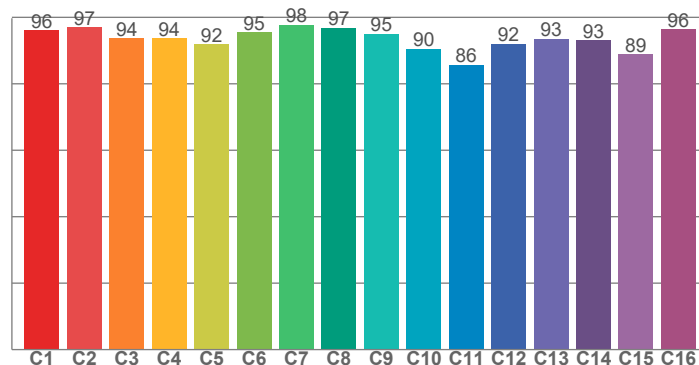
Power



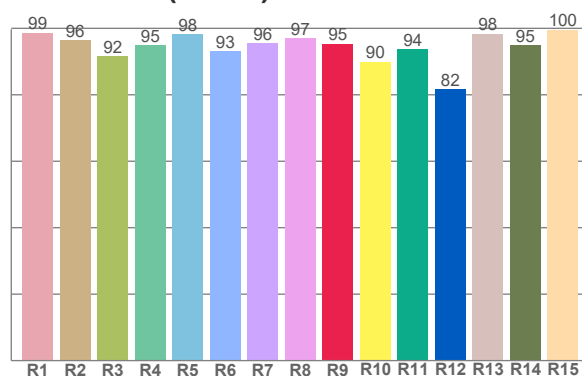
Color details



TM-30: 93.4



CRI: 95.7 (R1-R8)



CRI R values, only R1-R8 are used to calculate final CRI value

R1	R2	R3	R4	R5	R6	R7	R8	R9	R10	R11	R12	R13	R14	R15
98.7	96.4	91.7	94.8	98.4	93.2	95.5	97.0	95.4	90.0	93.8	81.8	98.4	95.0	99.6

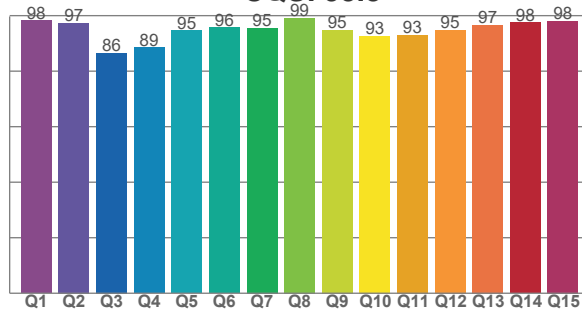
TM30 C values, 16 binned values out of total of 99 C values

C1	C2	C3	C4	C5	C6	C7	C8	C9	C10	C11	C12	C13	C14	C15	C16
96.0	97.0	93.6	93.8	91.9	95.4	97.8	96.9	95.0	90.5	85.7	92.0	93.5	93.0	88.8	96.4

CQS Q values

Q1	Q2	Q3	Q4	Q5	Q6	Q7	Q8	Q9	Q10	Q11	Q12	Q13	Q14	Q15
98.3	97.3	86.5	88.5	94.7	95.7	95.5	99.1	94.8	92.6	93.1	94.8	96.7	97.6	98.1

CQS: 93.8



Color parameters

Color temperature	Color rendering index	Red component	Color fidelity	Color gamut	Color quality scale	Color coordinate cie 1931	Color coordinate cie 1931	Color coordinate	Color coordinate	Color deviation from black body
CCT	CRI	CRI R9	TM30 Rf	TM30 Rg	CQS	x	y	u	v	Δuv
5788 K	95.7	95.4	93.4	102.6	93.8	0.326	0.335	0.205	0.316	-0.0006

TM-30 details

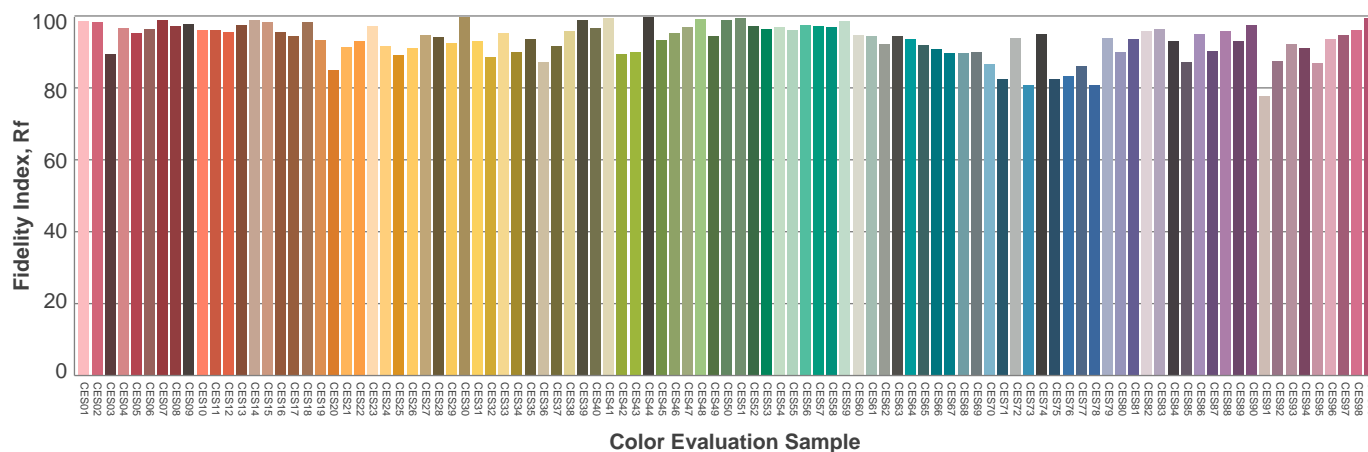
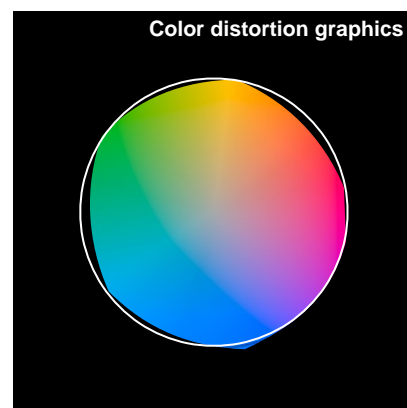
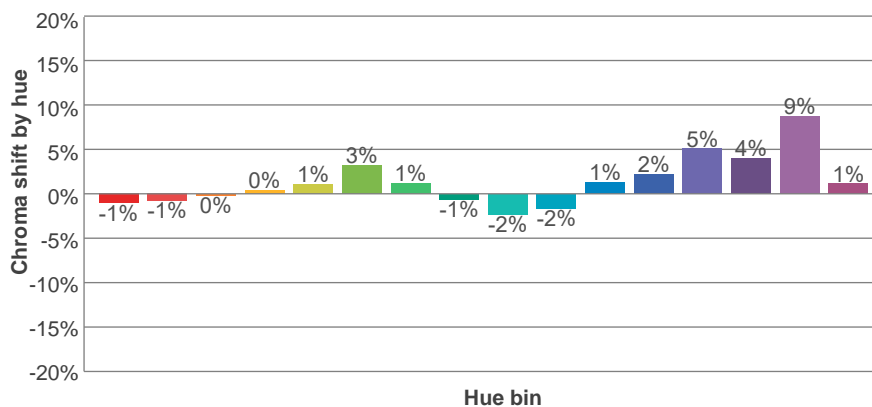
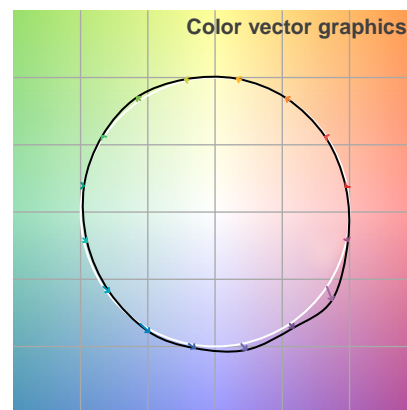
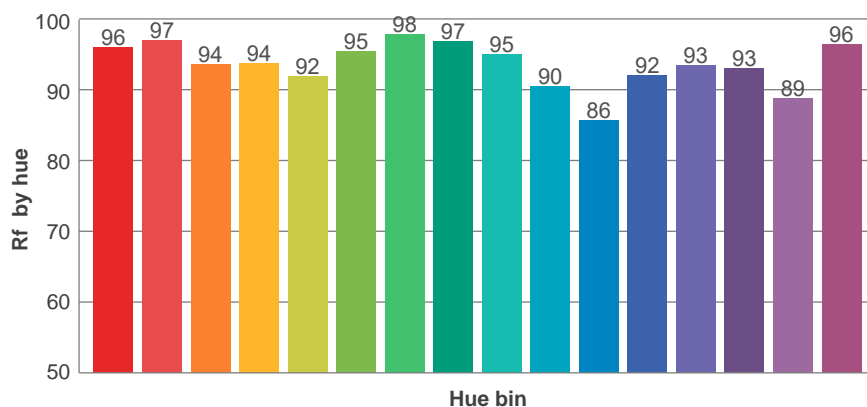
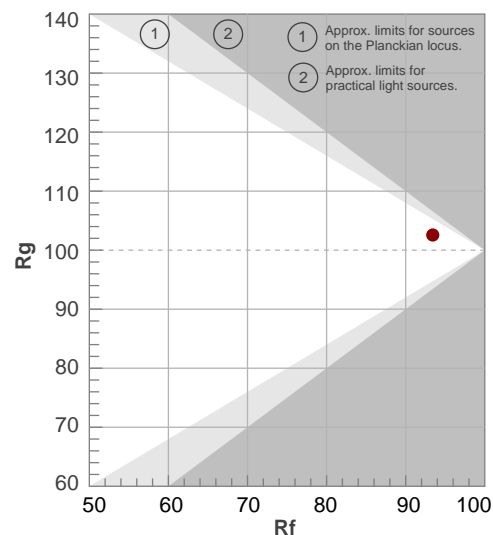
Rf 93.4

Fidelity index Rf

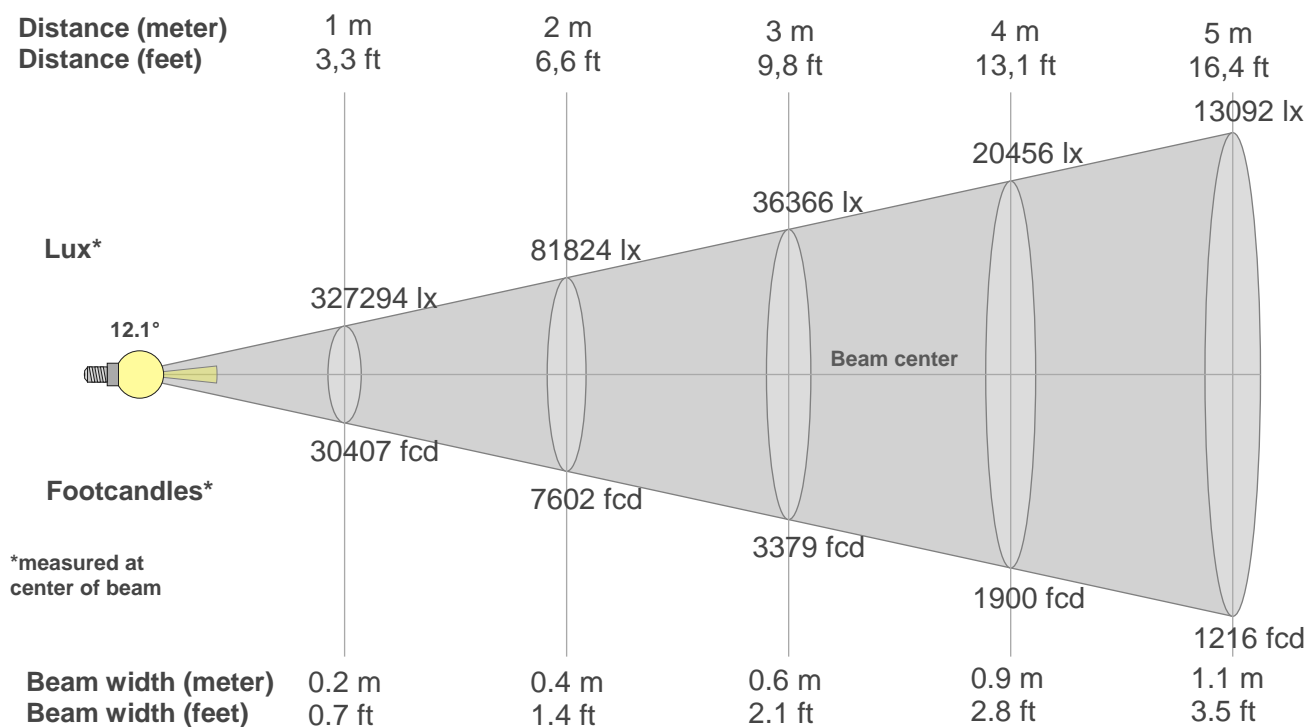
Rg 102.6

Gamut index Rg

Hue Bin	Ri	Shifts (%)	
		Chroma	Hue
1	96	-1%	-1%
2	97	-1%	1%
3	94	0%	3%
4	94	0%	3%
5	92	1%	3%
6	95	3%	1%
7	98	1%	-1%
8	97	-1%	0%
9	95	-2%	3%
10	90	-2%	6%
11	86	1%	9%
12	92	2%	5%
13	93	5%	3%
14	93	4%	1%
15	89	9%	-6%
16	96	1%	-2%



Beam details



Beam intensities from 1-20m

1m	2m	3m	4m	5m	6m	7m	8m	9m	10m	11m	12m	13m	14m	15m	16m	17m	18m	19m	20m
3.3ft	6.6ft	9.8ft	13.1ft	16.4ft	19.7ft	23ft	26.2ft	29.5ft	32.8ft	36.1ft	39.4ft	42.7ft	45.9ft	49.2ft	52.5ft	55.8ft	59.1ft	62.3ft	65.6ft
327294lx	81824lx	36366lx	20456lx	13092lx	9092lx	6679lx	5114lx	4041lx	3273lx	2705lx	2273lx	1937lx	1670lx	1455lx	1278lx	1133lx	1010lx	907lx	818lx
30406.7 fcd	7601.7 fcd	3378.5 fcd	1900.4 fcd	1216.3 fcd	844.6 fcd	620.5 fcd	475.1 fcd	375.4 fcd	304.1 fcd	251.3 fcd	211.2 fcd	179.9 fcd	155.1 fcd	135.1 fcd	118.8 fcd	105.2 fcd	93.8 fcd	84.2 fcd	76 fcd

Intensities in 0° c-plane

0°	1°	2°	3°	4°	5°	6°	7°	8°	9°	10°	11°	12°	13°	14°	15°	16°	17°	18°	19°
327k	324k	314k	295k	265k	222k	168k	110k	60k	26k	10k	4k	2k	1k	1k	1k	1k	1k	1k	1k
100%	99%	96%	90%	81%	68%	51%	33%	18%	8%	3%	1%	1%	0%	0%	0%	0%	0%	0%	0%

Intensities in 90° c-plane

0°	1°	2°	3°	4°	5°	6°	7°	8°	9°	10°	11°	12°	13°	14°	15°	16°	17°	18°	19°
327k	324k	314k	295k	265k	222k	168k	110k	60k	26k	10k	4k	2k	1k	1k	1k	1k	1k	1k	1k
100%	99%	96%	90%	81%	68%	51%	33%	18%	8%	3%	1%	1%	0%	0%	0%	0%	0%	0%	0%

Intensities in 180° c-plane

0°	1°	2°	3°	4°	5°	6°	7°	8°	9°	10°	11°	12°	13°	14°	15°	16°	17°	18°	19°
327k	324k	314k	295k	265k	222k	168k	110k	60k	26k	10k	4k	2k	1k	1k	1k	1k	1k	1k	1k
100%	99%	96%	90%	81%	68%	51%	33%	18%	8%	3%	1%	1%	0%	0%	0%	0%	0%	0%	0%

Intensities in 270° c-plane

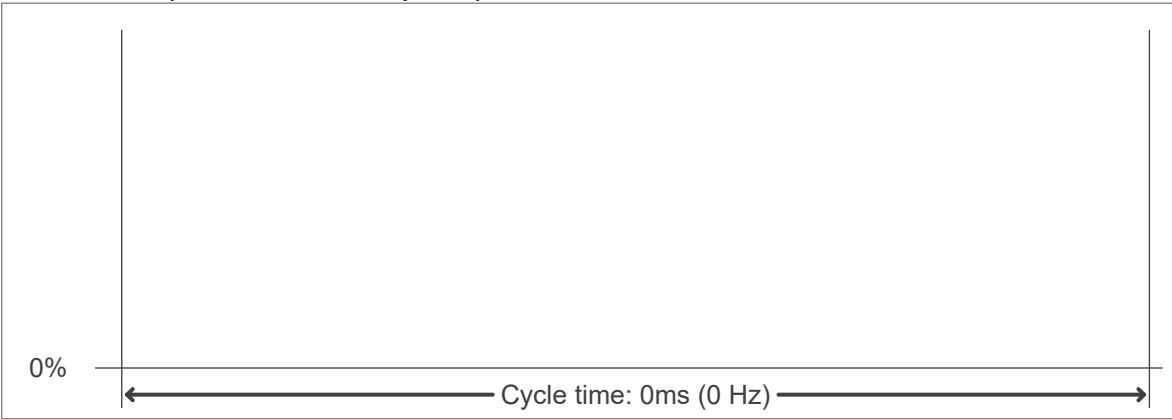
0°	1°	2°	3°	4°	5°	6°	7°	8°	9°	10°	11°	12°	13°	14°	15°	16°	17°	18°	19°
327k	324k	314k	295k	265k	222k	168k	110k	60k	26k	10k	4k	2k	1k	1k	1k	1k	1k	1k	1k
100%	99%	96%	90%	81%	68%	51%	33%	18%	8%	3%	1%	1%	0%	0%	0%	0%	0%	0%	0%

Beam angle 50%	Field angle 10%	Cutoff angle 2,5%	Intensity ratio in 120° cone	Intensity ratio in 90° cone
12.1°	17.5°	20.5°	78.2%	74.7%

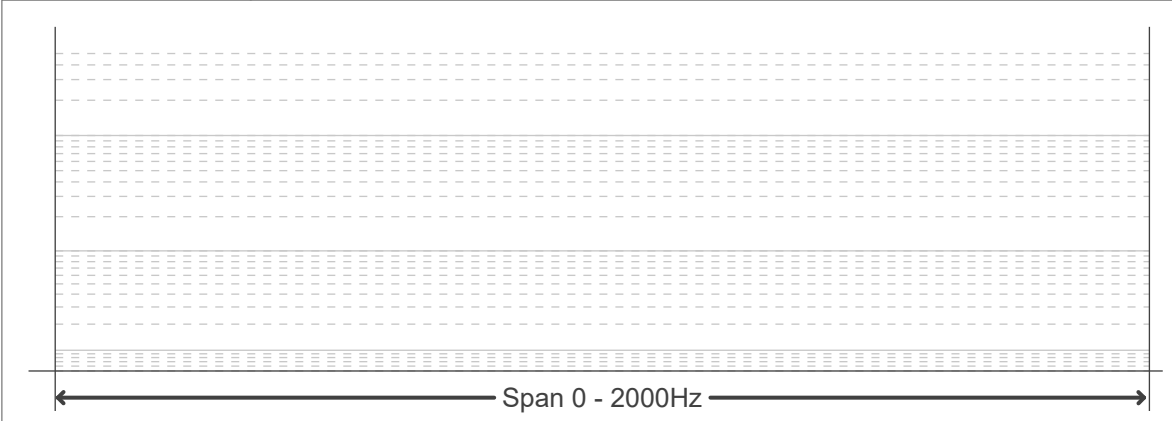
Flicker curve (complete sampled flicker signal)



Flicker frame (frame of one flicker period)



Flicker FFT (frequency scope of flicker curve)



Flicker results:

Flicker frequency:		n/a Hz	
Flicker index:	n/a	JA8/10 40Hz	n/a %
Flicker percentage:	n/a %	JA8/10 90Hz	n/a %
SVM: (Visual flicker)	n/a	JA8/10 200Hz	n/a %
PstLM	n/a	JA8/10 400Hz	n/a %
Mp	n/a	JA8/10 1000Hz	n/a %

Flicker conditions:

Sample rate:	n/a samples/second
--------------	--------------------